

Detection probabilities for sessile organisms

GABRIELE M. BERBERICH,^{1,†} CARSTEN F. DORMANN,² DIETRICH KLIMETZEK,² MARTIN B. BERBERICH,³
NATHAN J. SANDERS,⁴ AND AARON M. ELLISON⁵

¹Department of Geology, Faculty of Biology, University Duisburg-Essen, Universitätsstraße 5, 45141 Essen, Germany

²Department of Biometry and Environmental System Analysis, Faculty of Environment and Natural Resources,
Albert-Ludwigs-University of Freiburg, Tennenbacher Straße 4, 79085 Freiburg, Germany

³IT-Consulting Berberich, Am Plexer 7, 50374 Erftstadt, Germany

⁴Center for Macroecology, Evolution and Climate, Natural History Museum of Denmark, University of Copenhagen,
Copenhagen 2100 Denmark

⁵Harvard Forest, Harvard University, 324 North Main Street, Petersham, Massachusetts 01366 USA

Citation: Berberich, G. M., C. F. Dormann, D. Klimetzek, M. B. Berberich, N. J. Sanders, and A. M. Ellison. 2016. Detection probabilities for sessile organisms. *Ecosphere* 7(11):e01546. 10.1002/ecs2.1546

Abstract. Estimation of population sizes and species ranges is central to population and conservation biology. It is widely appreciated that imperfect detection of mobile animals must be accounted for when estimating population size from presence–absence data. Sessile organisms also are imperfectly detected, but correction for detection probability in estimating their population sizes is rare. We illustrate challenges of detection probability and population estimation of sessile organisms using censuses of red wood ant (*Formica rufa*-group) nests as a case study. These ants, widespread in the northern hemisphere, can make large (up to 2 m tall), highly visible nests. Using data from a mapping campaign by eight observers with varying experience of sixteen 3600-m² plots in the Black Forest region of southwest Germany, we compared three different statistical approaches (a nest-level data-augmentation patch-occupancy model with event-specific covariates; a plot-level Bayesian and maximum-likelihood model; nonparametric Chao-type estimators) for quantifying detection probability of sessile organisms. Detection probabilities by individual observers of red wood ant nests ranged from 0.31 to 0.64 for small nests, depending on observer experience and nest size (detection rates were approximately 0.17 higher for large nests), but not on habitat characteristics (forest type, local vegetation). Robust estimation of population density of sessile organisms—even highly apparent ones such as red wood ant nests—thus requires estimation of detection probability, just as it does when estimating population density of rare or cryptic species. Our models additionally provide approaches to calculate the number of observers needed for a required level of accuracy. Estimating detection probability is vital not only when censuses are conducted by experts, but also when citizen-scientists are engaged in mapping and monitoring of both common and rare species.

Key words: ants; Bayesian data-augmentation; citizen-science; detection probability; *Formica rufa*-group; Formicidae; nonparametric richness estimator; plot-level detection model; red wood ants; sessile organisms.

Received 31 May 2016; accepted 5 July 2016. Corresponding Editor: Debra P. C. Peters.

Copyright: © 2016 Berberich et al. This is an open access article under the terms of the Creative Commons Attribution License, which permits use, distribution and reproduction in any medium, provided the original work is properly cited.

† **E-mail:** gabriele.berberich@uni-due.de

INTRODUCTION

Estimating population size is a central requirement of population and conservation biology. Similarly, estimating species ranges and predicting their changes—for example, in response to climatic change and habitat disturbance—depend

on accurately documenting the presence and absence of individuals. In both cases, imperfect detection is a widely appreciated problem (e.g., Royle et al. 2005, MacKenzie et al. 2006, Kellner and Swihart 2014, Dénes et al. 2015): How can an observer be certain that individuals are detected when they are present? Consequently, estimates

of detection probability now are used routinely in subsequent estimation of population sizes and ranges of common, rare, or cryptic mobile animals (e.g., Williams et al. 2011).

For sessile organisms such as plants, many marine invertebrates, and a wide range of colony-forming organisms including ants and termites, estimating their colony sizes or ranges would seem to be much easier than for animals that are constantly moving. However, detection probability of sessile organisms is surprisingly variable and strongly depends on the conspicuousness of the focal taxa; habitat characteristics; sampling design, time and duration; and the experience of the observer (e.g., Alexander et al. 1997, Miller and Ambrose 2000, Fitzpatrick et al. 2009). Sessile organisms also are simple targets for monitoring by citizen-scientists.

Ants are ubiquitous in most terrestrial landscapes (e.g., Dunn et al. 2009). Red wood ants (henceforth RWA) form very large, often polydomous colonies (Ellis and Robinson 2014); individual mound nests may reach 2 m in height and contain >60,000 individual workers (Chen and Robinson 2013). RWA are of significant ecological importance (e.g., Klimetzek 1981, Way and Khoo 1992). Recently, RWA species have been introduced for biological control of undesirable insects (Seifert 2016), developed as biological indicators for otherwise undetected tectonic activity (Berberich et al. 2016), and some are considered

species of conservation concern (e.g., BfN 2012, IUCN 2015).

There are few long-term studies of RWA populations. Some investigators have suggested that populations of RWA are declining (e.g., Wellenstein 1990, Crist 2009), whereas others have reported that their populations are increasing (e.g., Stoschek and Roch 2006, Wilson 2011). Because none of these (or other) researchers have estimated or accounted for detection probability, a potential explanation for differences among studies is that estimates of occurrences or population sizes of RWA nests are inaccurate. Although this general problem has been recognized for mobile animals (e.g., MacKenzie et al. 2006), it is discussed only rarely in reviews of population sizes of endangered sessile species such as plants or ants (e.g., Philippi et al. 2001, Underwood and Fisher 2006, Godefroid et al. 2011). Therefore, we used the large, persistent, and highly apparent nests of red wood ants (*Formica rufa*-group) as a case study (Fig. 1).

Estimating the size of a population is a statistical problem addressed in hundreds of publications (e.g., Manning and Goldberg 2010, Grimm et al. 2014, Royle et al. 2015). Our case is different, although not atypical, and several aspects render the application of established approaches either unnecessarily cumbersome or completely infeasible. First, as sessile organisms do not move, they do not have a capture or resighting history

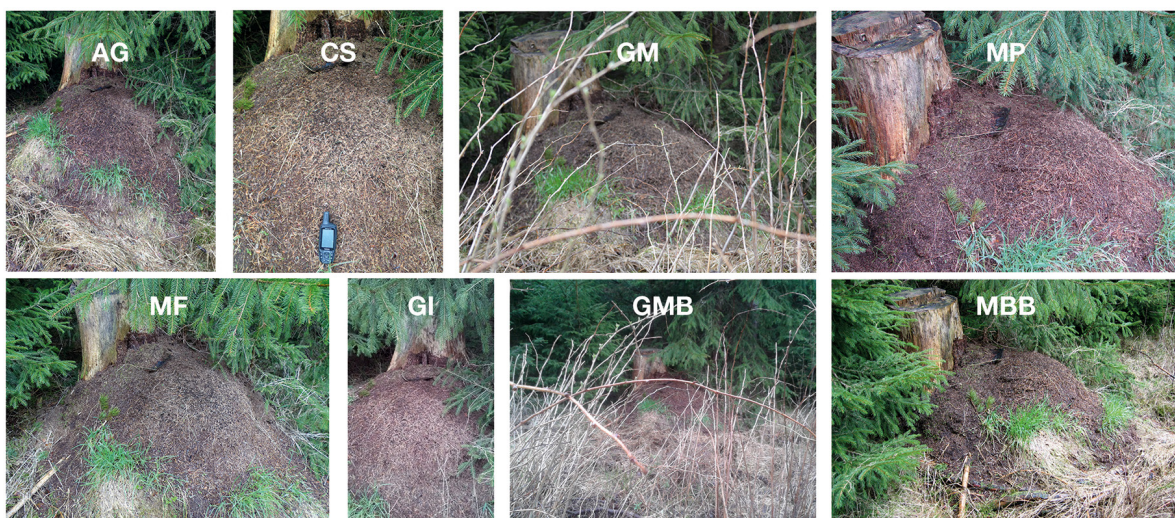


Fig. 1. Photographs of RWA nest A_03_06 by each observer; different observers are indicated by their initials.

(as used, e.g., in Huggins-style recapture models, e.g., Akanda and Alpizar-Jara 2014): Every time a plot is inspected, the nest will be found (with a certain detection probability) because the occupancy is constant ($\psi = 1$ for any object ever recorded). Second, detection probability is a function both of traits of the object (e.g., its size) and environmental conditions. Again, this has been addressed infrequently in recapture studies (but see Royle et al. 2004 for sparse data lacking object traits). This study employed several different statistical models, each of which is relatively simple and all of which estimate variability in detection rates by individual observers. An additional goal of the analysis was to quantify how many observers would be required to achieve a given level of accuracy for an estimator of population size. To achieve this goal, we also needed to estimate observer-specific detection probabilities.

In this study, we addressed five inter-related questions: (1) Do multiple observers detect or overlook the same RWA nest? (2) Is there a “best” way to quantify detection probability of sessile organism such as RWA nests? (3) Do colony size and density influence detection probability? (4) Does individual nest size influence detection probability? (5) How many observers are needed to converge on an estimate of the true number of nests? We asked these questions specifically with respect to individual RWA nests. In doing so, we improved estimates of RWA population sizes by including detection probability while simultaneously developing and using methods that will be applicable to a wide range of sessile organisms.

MATERIALS AND METHODS

Sampling design

Fieldwork was carried out during April 2015 in 16, randomly chosen 60 × 60 m plots near Friedenweiler (N47.54, E8.16, EPSG: 5677, 850–920 m a.s.l.) in the Black Forest region of southwest Germany. Eight observers (two experienced ones [coauthors GMB and MBB] and six inexperienced ones) independently mapped RWA nests for 1 h in each of the 16 plots. The inexperienced observers were trained beforehand to recognize RWA nests in the field and to map them using a GPS receiver (Garmin 60CSx/62S/64S; 10-m precision) held directly above a RWA nest and

register its location. Each observer also took a photograph of every mapped nest (Fig. 1) to facilitate its subsequent identification and to avoid double-counting when nearby nests were within the precision of the GPS. Each GPS receiver was preloaded with 1:50,000 topographic maps onto which the boundaries of all 16 study plots had been transferred so that plot boundaries could be observed and maintained during each census.

All cameras and GPS receivers were synchronized to local time and projection (WGS84 projection; Datum: Potsdam). To avoid two observers mapping the same plot at the same time, each observer mapped the plots in a specifically defined sequence. The track of each observer in each plot was recorded continuously to quantify speed, total distance covered, and individual search strategy (Fig. 2). Finally, to minimize errors in delimiting plot boundaries in the field, a buffer region of 10 m around each plot was included during field recording to account for GPS imprecision. All GPS data were downloaded immediately after collection and transferred into a GIS database. Forest stand types were classified in the field, and nest heights and diameters were classified from nest photographs.

Estimating and correcting for false positives

False positives for each observer i sampling in plot s were tabulated manually from the number of reported nests. The number of observed real nests N_{obs} was determined by cross-matching all mapped entities identified as RWA nests with their GPS coordinates, photographs, and recorded census tracks and expert knowledge. We linked GPS coordinate positions for each actual RWA nest recorded by each observer and averaged them to obtain a unique GPS position for each nest, which was then assigned a unique identifier. In all analyses, only real RWA nests were analyzed.

Covariates of detection probability

For exploratory analysis, we used a quasi-binomial generalized linear model to test whether nest sizes, classified by height classes (1–10, 11–50, 51–100, and >100 cm) or diameter classes (1–50, 51–100, 101–150, and >150 cm) of each ant nest (classified from nest photographs); the forest type (dominated by spruces [*Picea*], pines [*Pinus*],

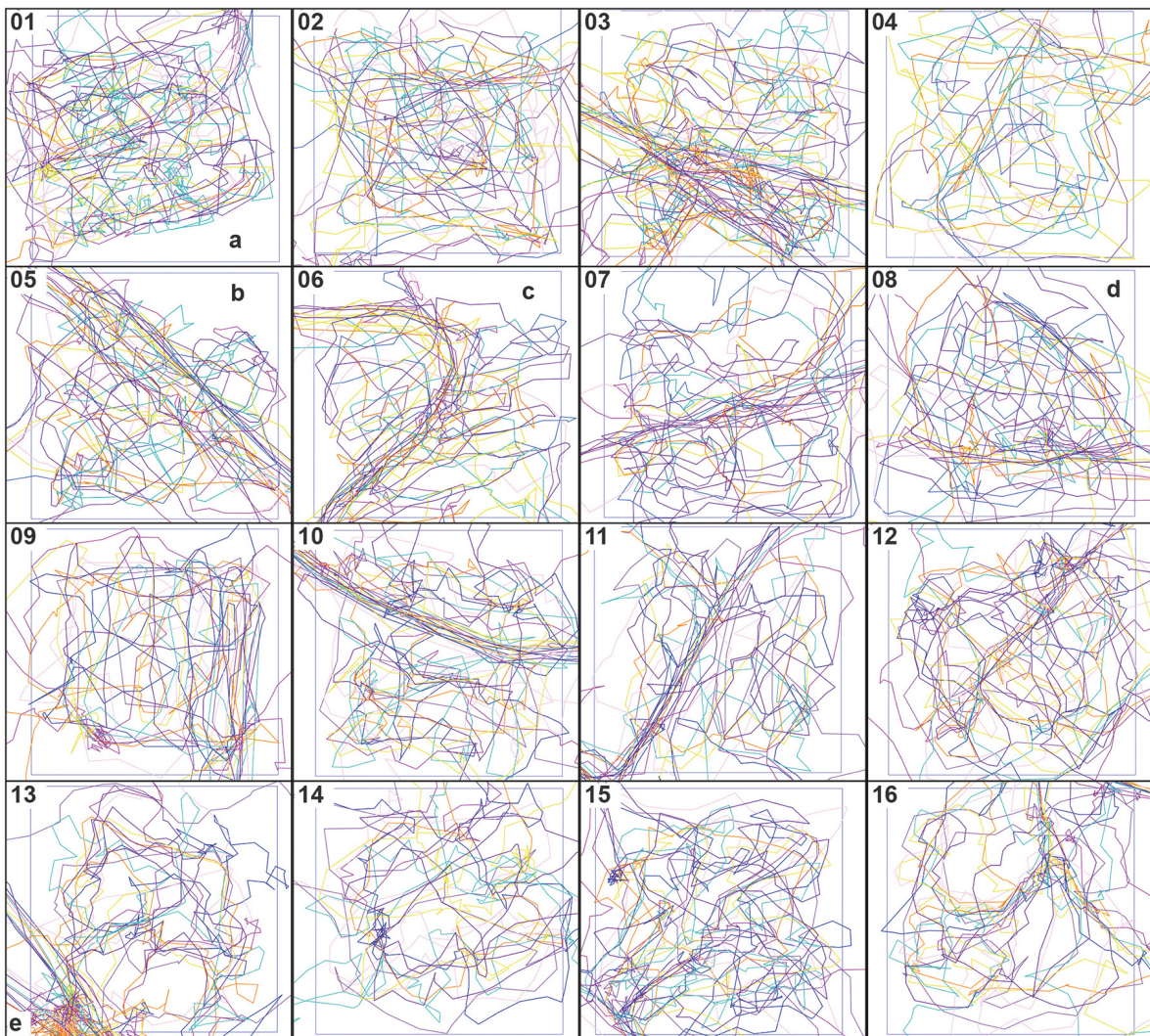


Fig. 2. Individual search tracks (colors denote different observers) recorded by GPS in 16 sampled plots. Letters denote roads (a); floodplain/wetland (b); dense understory layer of natural tree regeneration (c); dense understory of herbs and shrubs (d); and meeting point (e).

or beech [*Fagus*]) in which it occurred (classified in the field); or its location (within the forest, along forest roads, or along forest edges, as classified in the field and from GIS layers) affected the number of nests detected by each observer. Because the number of small nests greatly exceeded those of larger nests, we pooled the two largest size classes when regressing detection probability on nest size.

Statistical analyses

Our data set is unusual relative to others in the detection-probability literature because (1) our

objects do not move (in contrast to spatial recapture analyses, which estimate the probability of an animal having been observed in different plots, that is, its occupancy); (2) we counted ant nests in several plots; (3) instead of plot revisits (typical for recapture data), our “visits” were different observers, making it possible to determine observer-specific detection probabilities; and (4) each nest was characterized by its size, which may also have affected detection rates. Of course, there may be some nests that none of the eight observers discovered. For those, we obviously also do not know the size or habitat characteristics.

We used three fundamentally different ways to estimate the total number (\hat{N}) of nests and the number of nests in each of our sampling plots, \hat{N}_s .

Approach 1: Nest-level Bayesian data-augmentation.—The most detailed analyses were performed at the scale of individual nests (“nest-level” model). This nest-level model used a Bayesian data-augmentation approach to include the (potentially) overlooked nests in the analysis. For this analysis, we used an approach similar to patch-occupancy models, which essentially included two elements. First, an indicator variable assigned each nest a value equal to 1 if it existed and to 0 otherwise. This indicator variable was drawn from a Bernoulli distribution with a parameter representing the overall probability that a nest in the data actually existed. Second, we used a logistic regression of the detection probability to account for observer-specific detection rates and effects of nest size and other covariates. The data (one row per nest) were augmented by 50 rows of missing data ($N^{\text{augmented}}$ unobserved nests, that is, containing no information but contributing to the estimation of the overall probability that a nest existed; cf. Dorazio et al. 2011). For the $N^{\text{augmented}}$ unobserved nests, the model estimated how likely it was that they were actually there, but were not observed. This could be achieved because the unobserved nests (and their sizes) were drawn from the same data model as were the observed data. The main tuning parameter of this nest-level model was the number of nests assumed to be missing; the model was insensitive to this parameter and yielded the same results when using 20, 50, or 200 augmented rows. Uninformative priors were chosen for all model parameters. The model was implemented in JAGS (Plummer 2003).

Approach 2: Plot-level detection models.—We also estimated \hat{N}_s using two different types of plot-level analyses: one Bayesian and one using maximum likelihood. The disadvantage of these plot-level models is that they cannot accommodate nest-level information (e.g., size). On the other hand, the advantage of plot-level models is that the maximum-likelihood version can be used to readily simulate different numbers of observers (requiring thousands of randomized analyses).

For each plot and for each observer, we modeled the number of nests observed as a realization

from a binomial distribution, with parameters \hat{N}_s and \hat{P}_i , representing the estimated number of nests per plot s and observer i 's detection rate, respectively: $P(\hat{N}_{i,s}, \hat{P}_i)$. Note that this requires the estimation of 16 (plots) + 8 (observers) = 24 different parameters. These parameters could be estimated using Bayesian or maximum-likelihood approaches, differing, in our implementation, only in choosing (for the Bayesian version) priors for \hat{N}_s that have a lower bound at the observed number of nests at each plot. Then, for each plot \times observer combination, we estimated the expected number of observed nests as the product $\hat{N}_s \hat{P}_i$. As in the nest-level model, we estimated a detection rate for each observer. Note that the Bayesian plot-level model serves as a link between the data-augmentation model and the maximum-likelihood model, illustrating that the main benefit of the data-augmentation approach is the incorporation of nest sizes.

Finally, we used the maximum-likelihood model to simulate estimates of nest counts that we would get with fewer observers. To do so, we randomly drew 2, 3, ..., 7 observers and reran the estimation of nest numbers. Each simulation (number of observers) was repeated 1000 times.

Approach 3: Nonparametric richness estimators.—Last, we used nonparametric sample-based estimators, developed for estimating the number of species in samples of community data (Chao and Jost 2012, most recently reviewed by Chao et al. 2014). This approach does not account for observer-specific detection probability or plot-level covariates. We estimated the total number of nests in each plot, \hat{N}_s , and the total number of nests among the 16 plots, \hat{N} , using standard bias-corrected species richness estimators (Chao's S , jackknife 1 [Jack1] S , and Jack2 S ; see Chao and Jost 2012, Oksanen et al. 2015) implemented in the *specpool* function of the *vegan* library in R, version 3.2 (R Core Team 2015). These estimators are based on the observed number of nests that were detected by only one (“singletons”) or two (“doubletons”) observers.

Determining the number of observers needed to accurately estimate the number of nests

The analyses described above assumed that detection probability was independent of each

observer. However, our data showed that many nests were recorded by all observers, whereas others were found only by some (Fig. 3). In other words, we could not assume independence of observations: Adding more observers to the team led to records largely similar to what had already been reported. We computed the amount of effort required to accurately estimate numbers of nests assuming a constant detection probability among observers and serial correlation among observers (details of these calculations are given in Appendix S1).

Essentially, we estimated how more observers would affect our estimation, by assuming that new observers would have detection rates similar to those of our eight real observers, P_i . In addition to the detection rate of each observer, we had to compute the probability of a second observer finding a *new* nest, P_c , which we computed from the observed data for each observer pair. The probability that k observers would overlook a nest was computed as $(1 - P_c)^k(1 - P_i)$. We simulated data for 9 and 10 observers, bootstrapping values for P_c and P_i based on our eight observers.

Availability of data and code

The commented R-code for all our analyses and figures are provided as online supplementary material (Appendix S2). All data and raw R and JAGS codes are available from the Harvard Forest Data Archive (<http://harvardforest.fas.harvard.edu:8080/exist/apps/datasets/showData.html?id=hf286>), data set HF286.

RESULTS

Sampling effort

Although the sampling protocol specified that each observer spend 60 min in a plot, GPS records revealed that actual time spent by the single observer in each plot ranged from 30 to 120 min. On the other hand, the eight observers were highly consistent in their searching behavior and all appeared to cover the majority of each plot in their searches while avoiding wetlands and very dense vegetation (Fig. 2). However, there was a surprising lack of consistency in the nests detected and overlooked by the different observers (Fig. 3).

Estimates of detection probability and the number of nests

Estimated detection probability (\hat{P}_i) computed from the nest-level model ranged from 0.37 to 0.64 (mean = 0.50). The plot-level models yielded estimates ranging from 0.31 to 0.52 (mean = 0.42; Bayesian plot-level detection model) or from 0.35 to 0.58 (mean = 0.47; plot-level maximum-likelihood model; Table 1). Results of the Bayesian plot-level detection model suggested that we overlooked approximately 26% of nests (of an estimated total of 190 nests). The difference between the nest-level and plot-level estimates can be attributed to (1) fewer data points (the plot-level model aggregates all nests within a plot: $16 \times 8 = 128$ vs. 147 for the data-augmentation); and (2) the joint estimation of detection rates and true number of nests, $P(N_{i,s}^{\text{obs}} | \hat{P}_i, \hat{N}_s)$, rather than conditionally $P(N_{i,s}^{\text{obs}} | \hat{N}_{i,s})$, was estimated for each nest as in the data-augmentation model.

Estimated number of nests per plot (\hat{N}_s) ranged from 0 to 24 (patch-occupancy model), 0 to 27 (maximum likelihood), or 0 to 29 (Bayesian) (Table 2). Estimated total number of nests (\hat{N}) across all 16 plots = 147.7 (95% confidence interval = [147, 149]), that is, one to three nests overlooked; patch-occupancy model), 168.2 (maximum likelihood), or 190.1 (26% of nests overlooked; Bayesian). Estimated detection probabilities for the observers were slightly higher in the patch-occupancy model, but the estimated number of nests varied by a smaller percentage among models. In other words, while nest size affected detection probability, it did not greatly bias estimates of the total number of nests.

All of these estimates of total number of nests exceeded the bias-corrected ones that did not explicitly incorporate detection probability (Fig. 3, Table 3).

Covariates of detection probability

Large nests had a higher chance of being detected (estimate for $\beta_{\text{size}} = 0.819$). Height was a better predictor than diameter, making it necessary to incorporate nest height in an ideal analysis of these data. But nest size did not bias greatly estimates of the total number of nests. Detection probability increased significantly with both nest height (both linear [estimate = 6.7] and quadratic [estimate = -3.8] terms were significantly

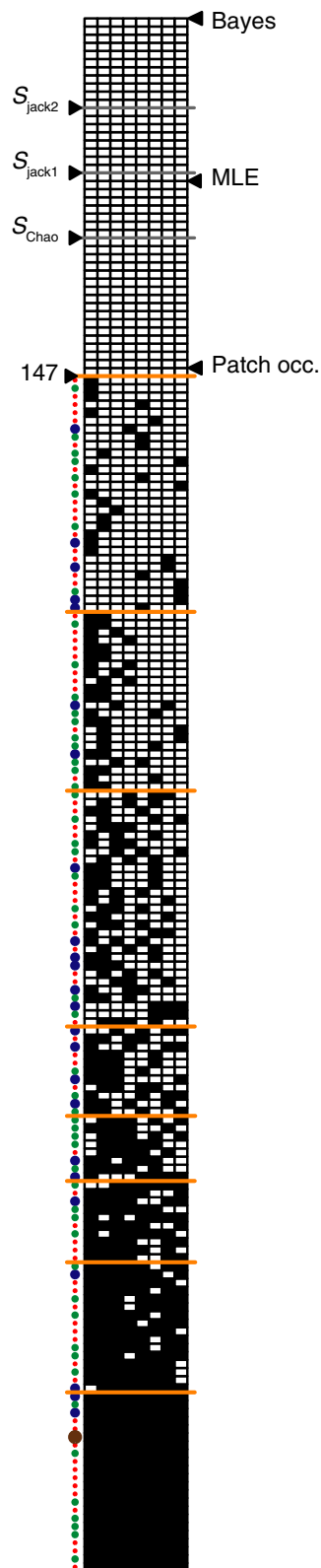


Fig. 3. Matrix of individual nests (rows) found (black) or undetected (white) by each observer (columns); nests are pooled across all 16 plots. Horizontal orange lines delimit nests seen (bottom to top) by all 8, only 7, ..., 1 of the observers. White cells at the top represent nests undetected by all eight observers, based on the total number of nests across the 16 plots observed at least once ($S_{\text{obs}} = 147$) or estimated by Chao, jackknife 1 and 2, nest-level Bayesian patch-occupancy data-augmentation (Patch occ.), maximum likelihood (MLE), and Bayesian models (triangles). Colored circles at the left of each column represent the four nest-height classes (1–10 [red], 11–50 [green], 51–100 [blue], and >101 cm [brown]).

different from 0 [$P = 0.002$ and $P < 0.001$, respectively]) and diameter (only linear term [estimate = 1.3] was significantly different from 0 [$P < 0.001$]) (Fig. 4). Moreover, we found no relationship between the number of nests per plot and detection probability (Fig. 5). There also were no significant effects of forest type, position, or interactions between these plot characteristics and nest-height size-class on nest detection (Fig. 6, Table 4).

Effects of having more observers

We observed that some of the 147 observed nests were detected by all observers (black rows in Fig. 3), whereas others were detected only by a single observer (rows with only a single black square in Fig. 3). The average correlation among pairs of observers in detecting a nest was relatively high (0.65, SD = 0.071). Nonetheless, each new observer added some additional information. Assuming that still more observers would be similar to those we worked with, we found that there was an inverse relationship between the number of observers and \hat{N} : Fewer observers led to higher estimates of overlooked and hence of the true number of nests (Fig. 7) because there are many nests but detection probability was relatively low. However, as the number of observers increased, fewer nests were overlooked (<1% with eight observers; see Fig. 7, inset), and consistency among observers refined (and shrank) the estimated number of nests (Fig. 7).

Table 1. Estimated detection probability \hat{P}_i and its SD for each of the eight observers (six “beginners” and two “experts”), using the patch-occupancy model per-observer observation, Bayesian site-level detection model, and site-level maximum-likelihood model.

Method	Observer	“Beginners”						“Experts”	
		1	2	3	4	5	6	7	8
Patch-occupancy	\hat{P}_i	0.37	0.38	0.44	0.41	0.49	0.43	0.61	0.64
	SD	0.040	0.038	0.041	0.039	0.042	0.040	0.042	0.040
Maximum likelihood	\hat{P}_i	0.35	0.35	0.40	0.38	0.45	0.40	0.56	0.58
	SD	0.062	0.060	0.069	0.066	0.075	0.067	0.099	0.114
Bayes	\hat{P}_i	0.31	0.32	0.36	0.34	0.41	0.36	0.49	0.52
	SD	0.039	0.039	0.041	0.040	0.043	0.042	0.047	0.048

DISCUSSION

Our work with red wood ants addressed five general questions: (1) Do multiple observers detect or overlook the same nest? (2) Is there a “best” way to quantify detection probability? (3) Do colony size and density influence detection probability? (4) Does individual nest size influence detection probability? (5) How many observers are needed to converge on an estimate of the true number of nests? For RWA, the short answers are as follows:

1. Multiple observers detect and overlook different individual nests.
2. Bayesian methods provide more precise estimates of detection probability.
3. Population size and density had little effect on detection probability.
4. Larger nests were more likely to be detected.
5. More observers are better, but the “return on investment” is a diminishing function.

Over the past several decades, a number of statistical models have been developed to correct for imperfect detection in population studies with respect to occupancy/species distribution modeling (reviewed in MacKenzie et al. 2006), mark–recapture (e.g., Lettink and Armstrong 2003, Chen and Robinson 2013), or distance sampling (Baccaro and Ferraz 2013). Many of these methods account for bias of observer, time of day, or season (Dénes et al. 2015). Survey-, plot-, and species-level factors differentially affecting detection of species or individuals are incorporated only partially in these models, resulting in a disproportionately high number of nondetections (Iknayan et al. 2014, Dénes et al. 2015). These issues are of particular concern for mobile organisms, but also can play a significant role for sessile ones (Chen et al. 2013). Additional difficulties also may arise when the objects under study vary in size or shape over time and are generally not easily noticed by unpracticed observers (e.g., Fitzpatrick et al. 2009).

The data-augmentation approach we used is fully in line with already published approaches (Royle et al. 2007, Kéry & Royle 2010, Dorazio et al. 2011). It models detection probability in exactly the same way, but the novelty is that it

Table 2. Estimated number of nests \hat{N}_s (maximum likelihood) in each plot and its SD, assuming a detection probability equal to the mean of the $\hat{P}_i = 0.42$ (maximum likelihood) or 0.39 (Bayes) from Table 1.

Plot	Maximum likelihood		Bayes	
	\hat{N}_s	SD	\hat{N}_s	SD
1	27.5	6.25	28.9	2.85
2	15.7	3.36	18.4	1.45
3	11.3	2.73	11.6	1.55
4	0	0	0.0	0.00
5	23.1	4.57	24.7	2.58
6	1.5	0.31	3.1	0.37
7	0.6	0.09	1.0	0.22
8	6.2	1.91	6.2	1.07
9	9.2	2.78	11.1	1.16
10	19.8	3.92	21.6	1.69
11	0.3	0.05	1.0	0.14
12	18.3	3.44	18.6	2.21
13	3.7	1.32	4.6	0.74
14	4.9	1.46	4.9	0.97
15	15.3	3.86	16.3	1.96
16	17.8	3.54	18.0	2.13
\hat{N}	168.2		190.1	

Table 3. Total number of nests (\hat{N}) and SE estimated over the 16 plots based on observations by eight observers.

Method	\hat{N}	SE
Observed	147	
Chao	163.7	8.25
Jackknife1	172.4	11.88
Jackknife2	180.0	
Bootstrap	160.0	8.63
Maximum likelihood	168.2	
Bayes	190.1	

Notes: Chao, Jackknife, and Bootstrap estimates were computed using the *specpool* function in the *vegan* package of R, version 3.2. Maximum likelihood and Bayesian estimates are from the column sums of Table 2.

adds a characteristic for each individual nest, and it estimates the number of unobserved nests. There was only a small proportion of nests that were observed by only one observer, unlike, for example, the American redstart data in Royle (2004). One advantage of our patch-occupancy

model with event-specific covariate (nest size) approach was that it allowed us to model each nest separately and thereby include a covariate for the nest. The estimates of detection probability and nest abundance were similar between the Bayesian and maximum-likelihood models.

Our study of RWA nests highlights some underlying aspects of detection probability for sessile organisms. Red wood ants are ecologically important and have been listed as threatened or endangered because repeated censuses often suggest declines in abundance (e.g., Dekoninck et al. 2010). However, detection probability of RWA nests has been estimated only once previously using a “mark–release–recapture method” while disturbing the ant colony (Chen and Robinson 2013). Our results, applying a noninvasive method without disturbing the ant colony, revealed that even in a well-designed survey of a well-known population, RWA nests were detected imperfectly even by experienced observers. Imperfect detection can bias seriously

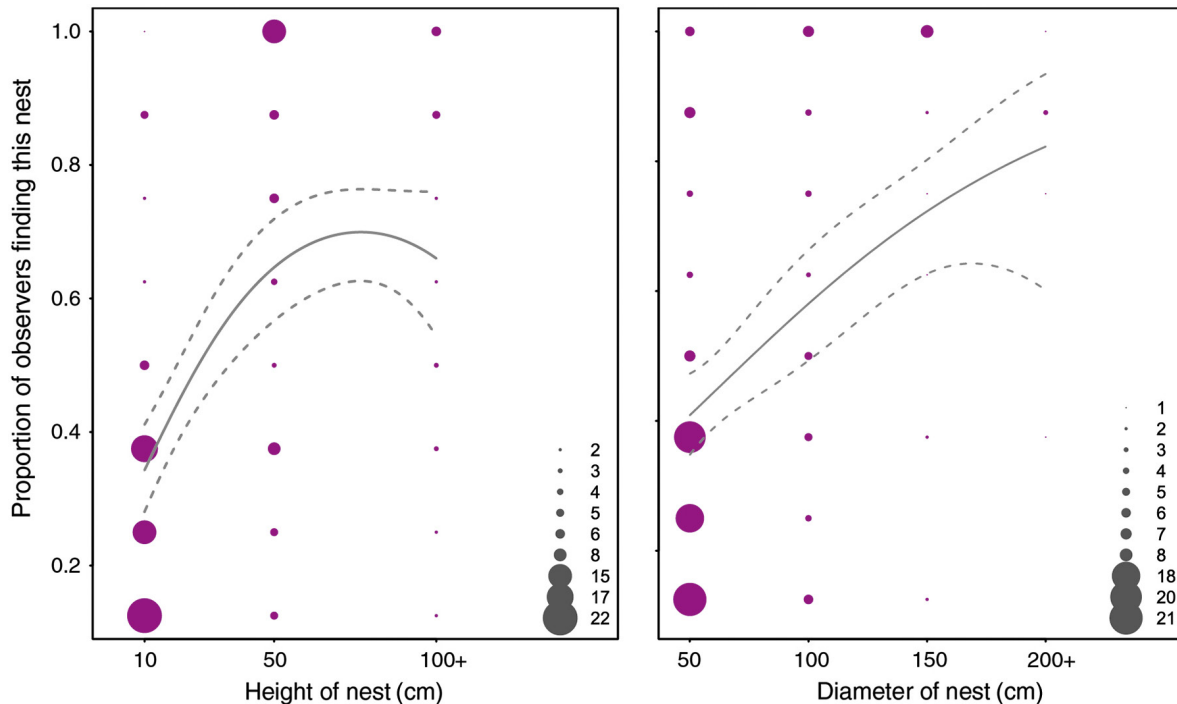


Fig. 4. Proportion of successful detections as a function of nest height (left) or diameter (right). Point sizes are proportional to the number of nests (gray circles). Solid lines are best-fit logistic regressions (quasi-binomial general linear model); dotted lines are ± 2 SE. Note that nests in the largest size classes (height ≥ 100 cm; diameter ≥ 200 cm) are pooled in these figures.

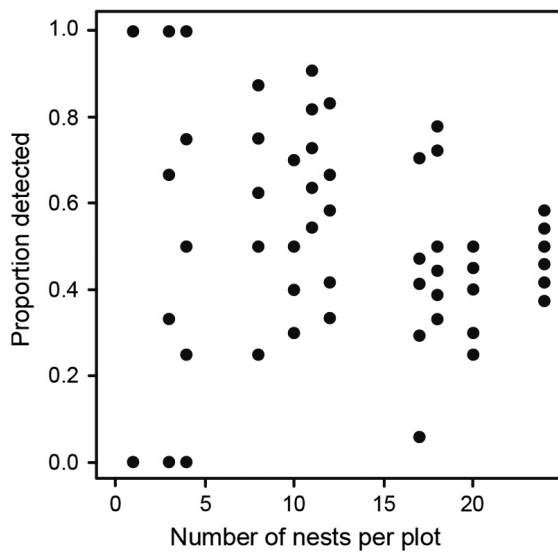


Fig. 5. Effect of nest abundance at each plot on the probability of detection. No trend was detectable in these data.

conventional estimators of species distributions and population sizes (Chen et al. 2013). Given a detection probability of RWA nests by experts of ≈ 0.63 , prior assertions of RWA decline (Dekoninck et al. 2010, IUCN 2015) should be revisited. Corrections for detection probability

not only should be included in future inventories of RWA populations and other sessile organisms, but also should be accounted for in decisions to list these species as threatened or endangered.

Numerous covariates affect detection success (Dénes et al. 2015). Our results suggest that observer experience strongly influenced detection success of RWA, which also had been noted for other essentially sessile insects (Fitzpatrick et al. 2009). Whereas beginners and experienced observers both were highly consistent in their searching per plot, beginners identified fewer RWA nests. Experienced observers consistently detected twice as many short RWA nests (1–10 cm in height), observed 33% more tall ones (>100 cm in height), and 66% more with smaller diameters (up to 50 cm) than beginners.

Although experience nearly doubled detection probability, experts were still imperfect observers. Detection probability may have been reduced because the survey was carried out early in the season during bouts of heavy rain. Dense undergrowth and steep topography (especially in plots 6, 12, and 14) also could have contributed to a high level of omissions. Nevertheless, detection probabilities of RWA nests in our study (Table 1) were comparable to those estimated in other studies of ants (Dorazio et al. 2011, Ward

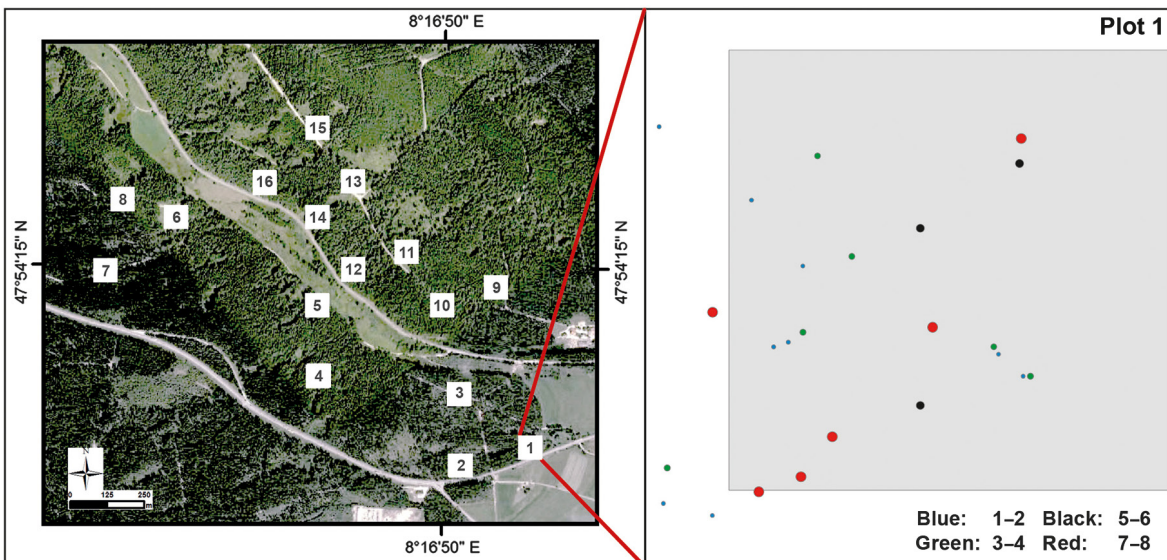


Fig. 6. Stand characteristics and detectability of nests: Locations and numbers of plots (left) and example of nest position and frequency of detection in Plot 1 (right; colors indicate number of observers detecting each nest) (aerial photograph: Google Earth).

Table 4. Analysis of variance table of the effects of stand characteristics and their interactions on frequency of detecting a red wood ant nest.

	df	MS	F	P
Height	1	168.3	32.85	<0.0001
Diameter	1	6.56	1.28	0.26
Forest type	1	10.9	2.12	0.15
Location	2	10.5	2.04	0.13
Height × Forest type	1	5.1	0.99	0.32
Height × Location	2	1.4	0.27	0.76
Forest type × Location	1	2.7	0.53	0.47
Residuals	129	5.1		

Notes: Forest type was coded as spruce or not spruce. Location was coded as forest interior, forest edge, or forest path.

and Stanley 2013). Although standard surveys of RWA are carried out during the summer, the dense undergrowth present then could lead to a higher percentage of nondetection. In contrast, we suggest that sampling RWA nests would be better performed in early spring when vegetation has not yet started to obscure the nests but temperatures are sufficiently high for ant activity. Finally, we found that with more surveys (or replicated ones: Dorazio et al. 2011), the combined detection probability increased relative to detection probability estimated from a single observer.

However, the gain in detection probability of RWA nests showed diminishing returns beyond six to eight observers (Fig. 7).

Even things as conspicuous as ant nests can be overlooked easily. Robust estimation of population density of sessile organisms—even highly apparent ones such as RWA nests—requires unbiased estimation of detection probability, just as it does when estimating population density of rare or cryptic species. Our Bayesian model for detection probability of sessile organisms included overlooked nests and other sources of heterogeneity in both occurrence and detection probabilities, and contributes to the further development of new methods for accurate assessments of population sizes.

As myrmecologists, we naturally are always surprised that not everyone is interested in mapping ant nests or estimating changes in ant population sizes through time and space (see also Underwood and Fisher 2006). However, the approach outlined here is relevant to any sessile organism for which robust population estimates are desired, but resources for exhaustive, repeated, population counts or estimates are limited (e.g., Philippi et al. 2001, Godefroid et al. 2011). Our methods can be used to provide answers to questions such as “how many

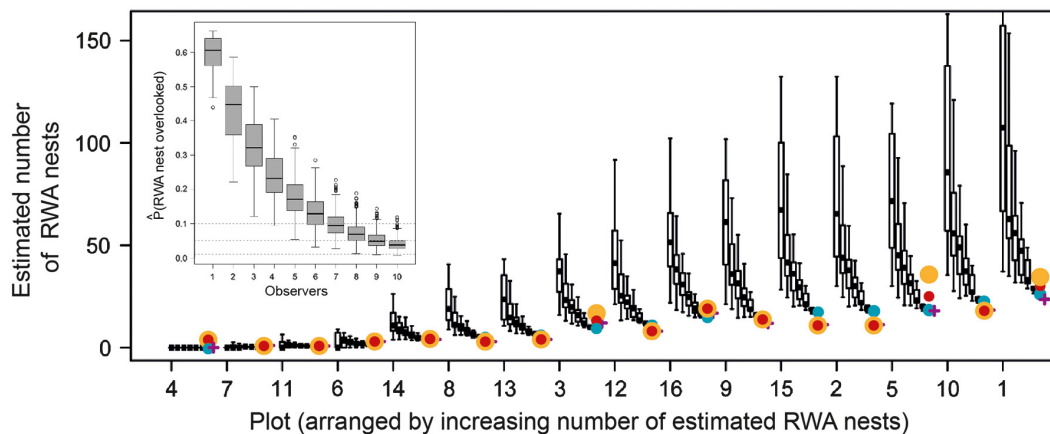


Fig. 7. Maximum-likelihood estimates of the number of nests at each plot, based on 100 randomly drawn combinations of two to seven observers. Plots are sorted by number of estimated nests based on eight observers (●). A + indicates confirmed number of nests; solid orange and red circles are, respectively, the estimated number of nests according to Chao and Jackknife1 estimators (Table 3). Inset: Simulated probability of overlooking a nest as a function of the number of observers. This simulation uses the data from the 16 plots, each bootstrapped 1000 times to simulate a random sequence of observers. Horizontal dashed lines are at 10%, 5%, and 1% of overlooked nests.

surveyors do I need to accurately estimate the size of this population?" or "can I use nonexpert surveyors, and how does that affect detection probability and their estimates of population size?" Answers to these questions are vital not only when censuses are conducted by experts, but also when citizen-scientists are engaged in mapping and monitoring of both common and rare species (e.g., Godet et al. 2009, Dickinson et al. 2010).

ACKNOWLEDGMENTS

We thank our colleagues from Brasov-Romania University and Forest Research Station, and Klaus Bernd Nickel, chairman of Ameisenschutzwerke Hessen e.V., for their efforts and support during the field study. Gita Benadi worked out the probability of overlooking nests shown in Fig. 7. Support for this work was provided by NSF grants 11-36646 and 12-37491 to AME and 11-36703 to NJS. NJS also thanks the Danish National Research Foundation for support provided to the Center for Macroecology, Evolution and Climate.

ENDANGERED SPECIES

We certify that our research was conducted in conformance with all applicable laws.

LITERATURE CITED

- Akanda, M. A. S., and R. Alpizar-Jara. 2014. Estimation of capture probabilities using generalized estimating equations and mixed effects approaches. *Ecology and Evolution* 4:1158–1165.
- Alexander, H. M., N. A. Slade, and W. D. Kettle. 1997. Application of mark-recapture models to estimation of the population size of plants. *Ecology* 78:1230–1237.
- Baccaro, F. B., and G. Ferraz. 2013. Estimating density of ant nests using distance sampling. *Insectes Sociaux* 60:103–110.
- Berberich, G., A. Grumpe, M. Berberich, D. Klimetzek, and C. Wöhler. 2016. Are red wood ants (*Formica rufa*-group) tectonic indicators? A statistical approach. *Ecological Indicators* 61:968–979.
- BfN (Bundesamt für Naturschutz). 2012. Rote Liste gefährdeter Tiere, Pflanzen und Pilze Deutschlands, Band 3: Wirbellose Tiere (Teil 1). *Naturschutz und Biologische Vielfalt Heft* 70:716 S.
- Chao, A., N. J. Gotelli, T. C. Hsieh, E. L. Sander, K. H. Ma, R. K. Colwell, and A. M. Ellison. 2014. Rarefaction and extrapolation with Hill numbers: a framework for sampling and estimation in species diversity studies. *Ecological Monographs* 84:45–67.
- Chao, A., and L. Jost. 2012. Coverage-based rarefaction and extrapolation: standardizing samples by completeness rather than size. *Ecology* 93:2533–2547.
- Chen, G., M. Kéry, M. Plattner, K. Ma, and B. Gardner. 2013. Imperfect detection is the rule rather than the exception in plant distribution studies. *Journal of Ecology* 101:183–191.
- Chen, Y.-H., and E. J. H. Robinson. 2013. A comparison of mark-release-recapture methods for estimating colony size in the wood ant *Formica lugubris*. *Insectes Sociaux* 60:351–359.
- Crist, T. O. 2009. Biodiversity, species interactions and functional role of ants (Hymenoptera: Formicidae) in fragmented landscapes: a review. *Myrmecological News* 12:3–13.
- Dekoninck, W., F. Hendrickx, P. Grootaert, and J. P. Maelfait. 2010. Present conservation status of red wood ants in north-western Belgium: worse than previously, but not a lost cause. *European Journal of Entomology* 107:209–218.
- Dénes, F. V., L.-F. Silveira, and S. R. Beissinger. 2015. Estimating abundance of unmarked animal populations: accounting for imperfect detection and other sources of zero inflation. *Methods in Ecology and Evolution* 6:543–556.
- Dickinson, J. L., B. Zuckerman, and D. Bonter. 2010. Citizen science as an ecological research tool: challenges and benefits. *Annual Review of Ecology, Evolution, and Systematics* 41:149–172.
- Dorazio, R. M., N. J. Gotelli, and A. M. Ellison. 2011. Modern methods of estimating biodiversity from presence-absence surveys. Pages 277–302 in G. Venora, O. Grillo, and J. Lopez-Pujol, editors. *Biodiversity loss in a changing planet*. InTech – Open Access Publisher, Rijeka, Croatia.
- Dunn, R. R., et al. 2009. Climatic drivers of hemispheric asymmetry in global patterns of ant species richness. *Ecology Letters* 12:324–333.
- Ellis, S., and E. J. H. Robinson. 2014. Polydomy in red wood ants. *Insectes Sociaux* 61:111–122.
- Fitzpatrick, M. C., E. L. Pressier, A. M. Ellison, and J. S. Elkinton. 2009. Observer bias and the detection of low density populations. *Ecological Applications* 19:1673–1679.
- Godefroid, S., et al. 2011. How successful are plant reintroductions? *Biological Conservation* 144:672–682.
- Godet, L., J. Fournier, N. Toupoint, and F. Olivier. 2009. Mapping and monitoring intertidal benthic habitats: a review of techniques and a proposal for a new visual methodology for the European coasts. *Progress in Physical Geography* 33:378–402.
- Grimm, A., B. Gruber, and K. Henle. 2014. Reliability of different mark-recapture methods for population

- size estimation tested against reference population sizes constructed from field data. *PLoS ONE* 9:e98840.
- Iknayan, K. J., M. W. Tingley, B. J. Furnas, and S. R. Beissinger. 2014. Detecting diversity: emerging methods to estimate species diversity. *Trends in Ecology & Evolution* 29:97–106.
- IUCN. 2015. The International Union for Conservation of Nature Red List of Threatened Species. Version 2015.1. <http://www.iucnredlist.org>
- Kellner, K. F., and R. K. Swihart. 2014. Accounting for imperfect detection in ecology: a quantitative review. *PLoS ONE* 9:e111436.
- Kéry, M., and J. A. Royle. 2010. Hierarchical modeling and estimation of abundance and population trends in metapopulation designs. *Journal of Animal Ecology* 79:453–461.
- Klimetzek, D. 1981. Population studies on hill building wood-ants of the *Formica rufa*-group. *Oecologia* 48:418–421.
- Lettink, M., and D. P. Armstrong. 2003. An introduction to using mark-recapture analysis for monitoring threatened species. Pages 5–32 in *Department of Conservation 2003: using mark-recapture analysis for monitoring threatened species: introduction and case study*. Department of Conservation Technical Series 28, 63 pp.
- MacKenzie, D. I., J. D. Nichols, J. A. Royle, K. H. Pollock, L. L. Bailey, and J. E. Hines. 2006. *Occupancy estimation and modeling: inferring patterns and dynamics of species occurrence*. Academic Press, Burlington, Massachusetts, USA.
- Manning, J. A., and C. S. Goldberg. 2010. Estimating population size using capture–recapture encounter histories created from point-coordinate locations of animals. *Methods in Ecology and Evolution* 1:389–397.
- Miller, A. W., and R. F. Ambrose. 2000. Sampling patchy distributions: comparison of sampling designs in rocky intertidal habitats. *Marine Ecology Progress Series* 196:1–14.
- Oksanen, J., F. G. Blanchet, R. Kindt, P. Legendre, P. R. Minchin, R. B. O'Hara, G. L. Simpson, P. Solymos, M. H. H. Stevens, and H. Wagner. 2015. *vegan: community Ecology Package*. R package version 2.3-2. <https://cran.r-project.org/web/packages/vegan/index.html>
- Philippi, T., B. Collins, S. Guisti, and P. M. Dixon. 2001. A multistage approach to population monitoring for rare plant populations. *Natural Areas Journal* 21:111–116.
- Plummer, M. 2003. JAGS: a program for analysis of bayesian graphical models using Gibbs sampling. *Proceedings of the 3rd International Workshop on Distributed Statistical Computing (DSC 2003)*, March 20–22, Vienna, Austria.
- R Core Team. 2015. R version 3.2.2. <https://www.r-project.org/>
- Royle, J. A. 2004. N-mixture models for estimating population size from spatially replicated counts. *Biometrics* 60:108–115.
- Royle, J. A., J. D. Nichols, M. Kéry, and E. Ranta. 2005. Modelling occurrence and abundance of species when detection is imperfect. *Oikos* 110:353–359.
- Royle, J. A., R. M. Dorazio, and W. A. Link. 2007. Analysis of multinomial models with unknown index using data augmentation. *Journal of Computational and Graphical Statistics* 16:67–85.
- Royle, J. A., C. Sutherland, A. K. Fuller, and C. C. Sun. 2015. Likelihood analysis of spatial capture–recapture models for stratified or class structured populations. *Ecosphere* 6:22.
- Seifert, B. 2016. The supercolonial European wood ant *Formica paralugubris* Seifert, 1996 (Hymenoptera: Formicidae) introduced to Canada and its predicted role in Nearctic forests. *Myrmecological News* 22:11–20.
- Stoschek, N., and T. Roch. 2006. Zentrale Erfassung von Waldameisen im Freistaat Sachsen. *AFZ-Der Wald* 61:186–188.
- Underwood, E. C., and B. L. Fisher. 2006. The role of ants in conservation monitoring: if, when, and how. *Biological Conservation* 132:166–182.
- Ward, D. F., and M. C. Stanley. 2013. Site occupancy and detection probability of Argentine ant populations. *Journal of Applied Entomology* 137:197–203.
- Way, M. J., and K. C. Khoo. 1992. Role of ants in pest management. *Annual Review of Entomology* 37:479–503.
- Wellenstein, G. 1990. *Waldbewohnende Ameisen, ihre Bedeutung, ihre Biologie, ihre Hege und ihr Schutz*. Allgäuer Zeitungsverlag, Kempten, Germany.
- Williams, K. A., P. C. Frederick, and J. D. Nichols. 2011. Use of the superpopulation approach to estimate breeding population size: an example in asynchronously breeding birds. *Ecology* 92:821–828.
- Wilson, P. 2011. Wood ants of Wyre. *Wyre Forest Study Group Review* 2011:17–22.

SUPPORTING INFORMATION

Additional Supporting Information may be found online at: <http://onlinelibrary.wiley.com/doi/10.1002/ecs2.1546/full>